



# Test Report

Report No. A222008945810104

Page 1 of 9

**Company Name** DONG GUAN BRIGHT LED ELECTRONICS LTD  
**shown on Report**  
**Address** NO.8,GAO LONG EAST RD ,GAOBU TOWN,DONG GUAN CTY,GUANG DONG PROVINCE,CHINA 523283

**The following sample(s) and sample information was/were submitted and identified by/on the behalf of the applicant**

Sample No.	Final Product Name	Sample Name(s)
001	DISPLAY	Display PIN
002		Display 树脂
003		Display REF
004		Display PCB

**Sample Received Date** Mar. 11, 2022  
**Testing Period** Mar. 11, 2022 to Mar. 31, 2022  
**Test Requested** As specified by client, to test Lead (Pb), Cadmium (Cd), Mercury (Hg), Hexavalent Chromium (Cr(VI)), Polybrominated Biphenyls (PBBs), Polybrominated Diphenyl Ethers (PBDEs), Phthalates (DBP, BBP, DEHP, DIBP) in the submitted sample(s).

**Test Method/Test Result(s)** Please refer to the following page(s).

\*\*\*\*\*

**Conclusion**

Tested Sample	According to standard/directive	Result
Submitted Sample	RoHS Directive 2011/65/EU with amendment (EU) 2015/863	PASS

\*\*\*\*\*

PASS means that the results shown on the report comply with the limits set by RoHS Directive 2011/65/EU with amendment (EU) 2015/863.

Tested by Jonas Guo Reviewed by Tim Yu

Approved by Helen Liu Date Mar. 31, 2022

Helen Liu  
Lab Authorized Signatory

No. R450146771



CTI Testing International Group Co.,Ltd.  
 11/F, CTI Building, Xing Dong Community, Xin'an Sub-district, Bao'an District, Shenzhen City, Guangdong Province, P.R. China

# Test Report

Report No. A222008945810104

Page 2 of 9

Sample No.	Reference Report No. -Sample No.
002	A222008945810103-002

**Remark:**

The samples with the reference information in the table above are non-tested in this report. Test results and the photos of the "Sample No." column reference to "Reference Report Number - Sample No." column.

# Test Report

Report No. A222008945810104

Page 3 of 9

**Test Method**

Tested Item(s)	Test Method	Measured Equipment(s)
Lead (Pb)	IEC 62321-5:2013	ICP-OES
Cadmium (Cd)	IEC 62321-5:2013	ICP-OES
Mercury (Hg)	IEC 62321-4:2013+AMD1:2017 CSV	ICP-OES
Hexavalent Chromium (Cr(VI))	IEC 62321-7-1:2015	UV-Vis
	IEC 62321-7-2:2017 and/or determination of Total Chromium by IEC 62321-5:2013	UV-Vis/ICP-OES
Polybrominated Biphenyls (PBBs)	IEC 62321-6:2015	GC-MS
Polybrominated Diphenyl Ethers (PBDEs)	IEC 62321-6:2015	GC-MS
Phthalates (DBP, BBP, DEHP, DIBP)	IEC 62321-8:2017	GC-MS

# Test Report

Report No. A222008945810104

Page 4 of 9

## Test Result(s)

Tested Item(s)	Result			MDL	Limit
	001	002	003		
Lead (Pb)	N.D.	N.D.	N.D.	2 mg/kg	1000 mg/kg
Cadmium (Cd)	N.D.	N.D.	N.D.	2 mg/kg	100 mg/kg
Mercury (Hg)	N.D.	N.D.	N.D.	2 mg/kg	1000 mg/kg
Hexavalent Chromium (Cr(VI))	--	N.D.	N.D.	8 mg/kg	1000 mg/kg
	N.D. ▼	--	--	0.10 µg/cm <sup>2</sup> (LOQ)	1000 mg/kg

Tested Item(s)	Result	MDL	Limit
	004		
Lead (Pb)	N.D.	2 mg/kg	1000 mg/kg
Cadmium (Cd)	N.D.	2 mg/kg	100 mg/kg
Mercury (Hg)	N.D.	2 mg/kg	1000 mg/kg
Hexavalent Chromium (Cr(VI))	N.D.	8 mg/kg	1000 mg/kg
	--	0.10 µg/cm <sup>2</sup> (LOQ)	1000 mg/kg

Tested Item(s)	Result			MDL	Limit
	002	003	004		
<b>Polybrominated Biphenyls (PBBs)</b>					
Monobromobiphenyl	N.D.	N.D.	N.D.	5 mg/kg	1000 mg/kg
Dibromobiphenyl	N.D.	N.D.	N.D.	5 mg/kg	
Tribromobiphenyl	N.D.	N.D.	N.D.	5 mg/kg	
Tetrabromobiphenyl	N.D.	N.D.	N.D.	5 mg/kg	
Pentabromobiphenyl	N.D.	N.D.	N.D.	5 mg/kg	
Hexabromobiphenyl	N.D.	N.D.	N.D.	5 mg/kg	
Heptabromobiphenyl	N.D.	N.D.	N.D.	5 mg/kg	
Octabromobiphenyl	N.D.	N.D.	N.D.	5 mg/kg	
Nonabromobiphenyl	N.D.	N.D.	N.D.	5 mg/kg	
Decabromobiphenyl	N.D.	N.D.	N.D.	5 mg/kg	

# Test Report

Report No. A222008945810104

Page 5 of 9

Tested Item(s)	Result			MDL	Limit
	002	003	004		
<b>Polybrominated Diphenyl Ethers (PBDEs)</b>					
Monobromodiphenyl ether	N.D.	N.D.	N.D.	5 mg/kg	1000 mg/kg
Dibromodiphenyl ether	N.D.	N.D.	N.D.	5 mg/kg	
Tribromodiphenyl ether	N.D.	N.D.	N.D.	5 mg/kg	
Tetrabromodiphenyl ether	N.D.	N.D.	N.D.	5 mg/kg	
Pentabromodiphenyl ether	N.D.	N.D.	N.D.	5 mg/kg	
Hexabromodiphenyl ether	N.D.	N.D.	N.D.	5 mg/kg	
Heptabromodiphenyl ether	N.D.	N.D.	N.D.	5 mg/kg	
Octabromodiphenyl ether	N.D.	N.D.	N.D.	5 mg/kg	
Nonabromodiphenyl ether	N.D.	N.D.	N.D.	5 mg/kg	
Decabromodiphenyl ether	N.D.	N.D.	N.D.	5 mg/kg	

Tested Item(s)	Result			MDL	Limit
	002	003	004		
<b>Phthalates (DBP, BBP, DEHP, DIBP)</b>					
Dibutyl phthalate (DBP) CAS#:84-74-2	N.D.	N.D.	N.D.	50 mg/kg	1000 mg/kg
Butyl benzyl phthalate (BBP) CAS#:85-68-7	N.D.	N.D.	N.D.	50 mg/kg	1000 mg/kg
Di-(2-ethylhexyl) phthalate (DEHP) CAS#:117-81-7	N.D.	N.D.	N.D.	50 mg/kg	1000 mg/kg
Diisobutyl phthalate (DIBP) CAS#:84-69-5	N.D.	N.D.	N.D.	50 mg/kg	1000 mg/kg

## Sample/Part Description

- 001 Silver-white metal
- 002 Transparent solid
- 003 White plastic with black coating
- 004 PCB (Tested as a whole)<sup>#</sup>

# Test Report

Report No. A222008945810104

Page 6 of 9

**Remark:** -The sample(s) had been dissolved totally tested for Lead, Cadmium, Mercury.  
-# The sample(s) was tested as a whole, because it's impossible to disassemble or separate it by current equipment and technology. The result(s) shown on this report may be different from the content of any homogeneous material.  
-MDL = Method Detection Limit  
-N.D. = Not Detected (<MDL or LOQ)  
-mg/kg = ppm = parts per million  
-1000 mg/kg = 0.1%  
-LOQ = Limit of Quantification, The LOQ of Hexavalent chromium is 0.10  $\mu\text{g}/\text{cm}^2$   
-▼The sample is negative for Cr(VI) – The Cr(VI) concentration is below 0.10  $\mu\text{g}/\text{cm}^2$ . The coating is considered a non-Cr(VI) based coating.

CTI  
华测检测  
章

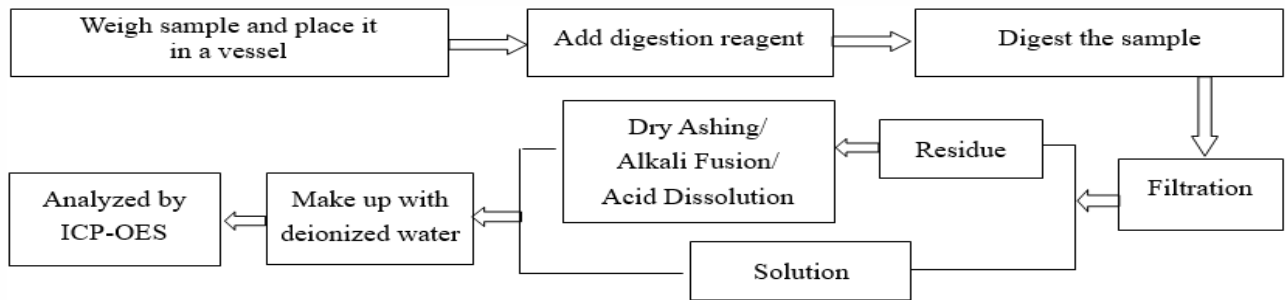
# Test Report

Report No. A222008945810104

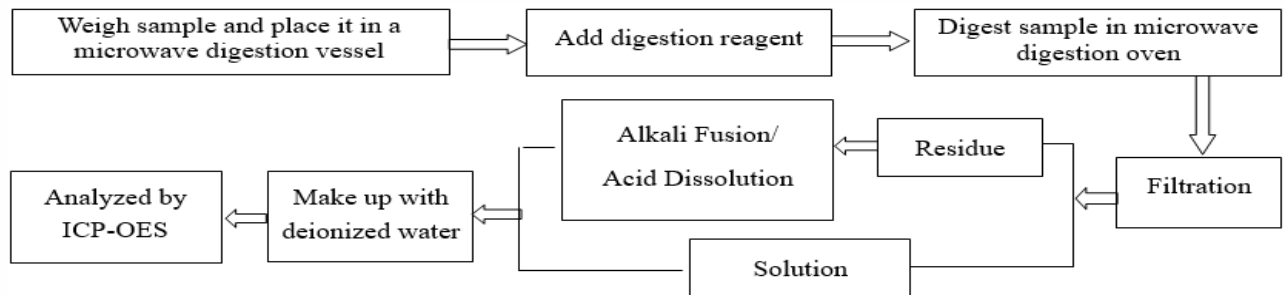
Page 7 of 9

## Test Process

### 1. Lead (Pb), Cadmium (Cd), Chromium(Cr)

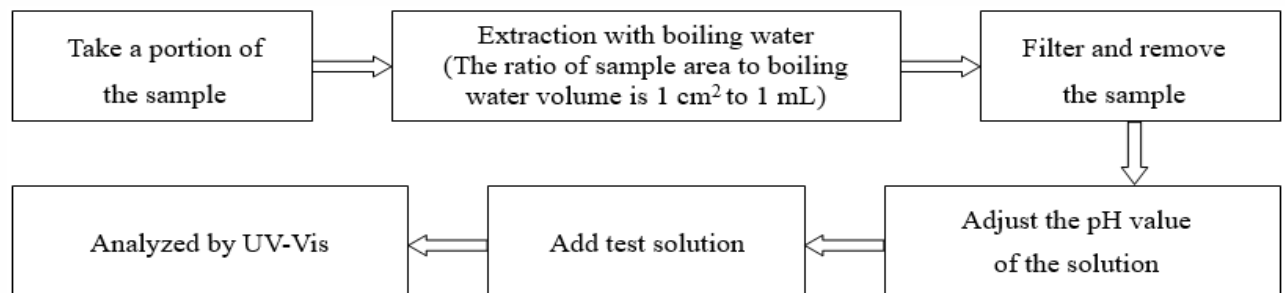


### 2. Mercury (Hg)

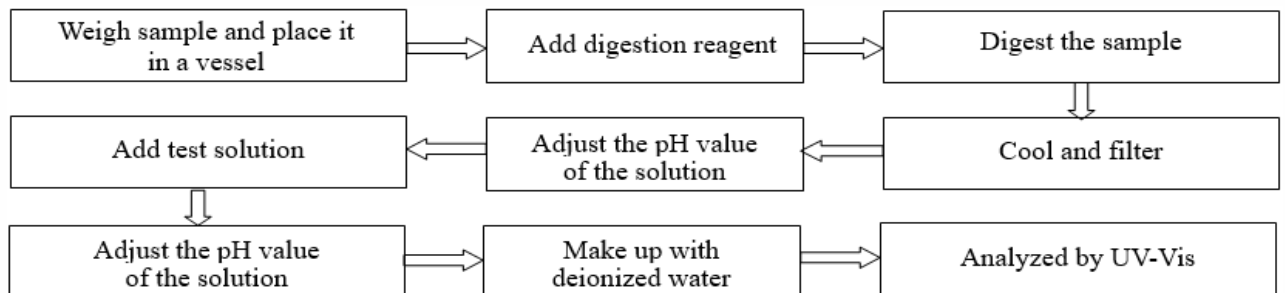


### 3. Hexavalent Chromium (Cr(VI))

#### (1) IEC 62321-7-1:2015



#### (2) IEC 62321-7-2:2017

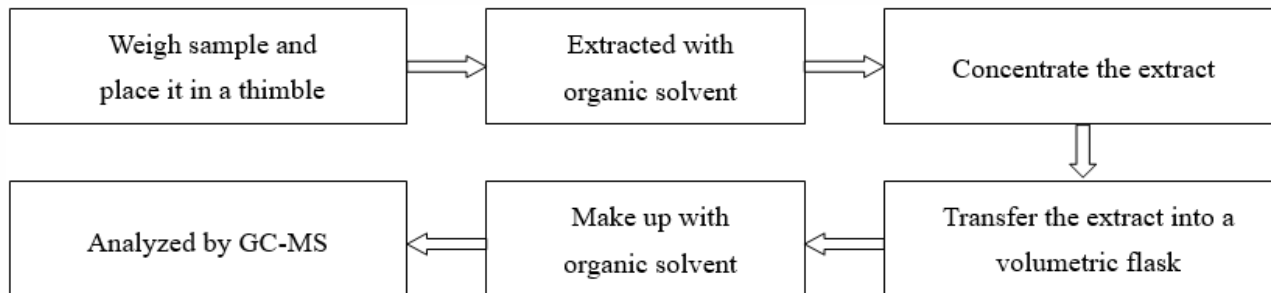


# Test Report

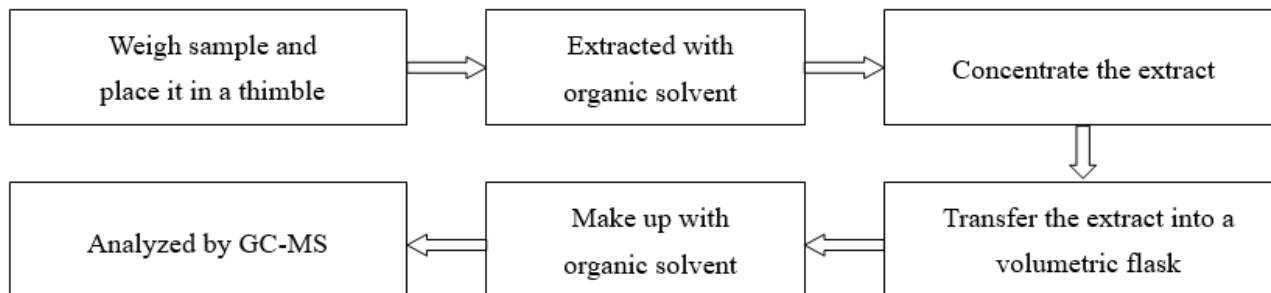
Report No. A222008945810104

Page 8 of 9

## 4. Polybrominated Biphenyls (PBBs), Polybrominated Diphenyl Ethers (PBDEs)



## 5. Phthalates (DBP, BBP, DEHP, DIBP)





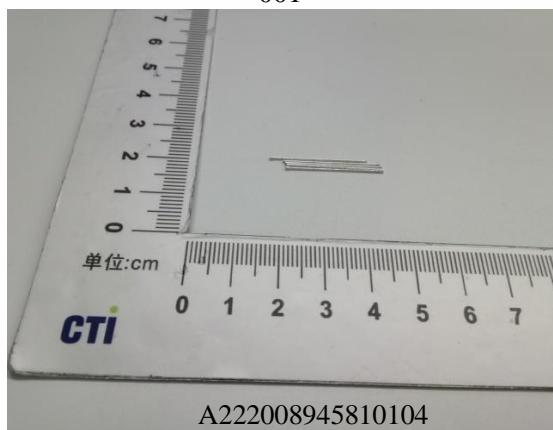
# Test Report

Report No. A222008945810104

Page 9 of 9

## Photo(s) of the sample(s)

001



A222008945810104

002



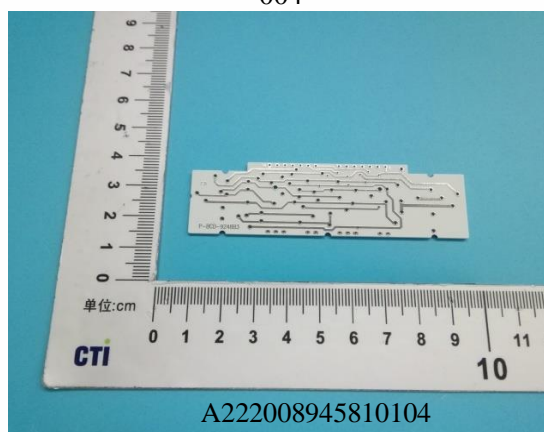
A222008945810104

003



A222008945810104

004



A222008945810104

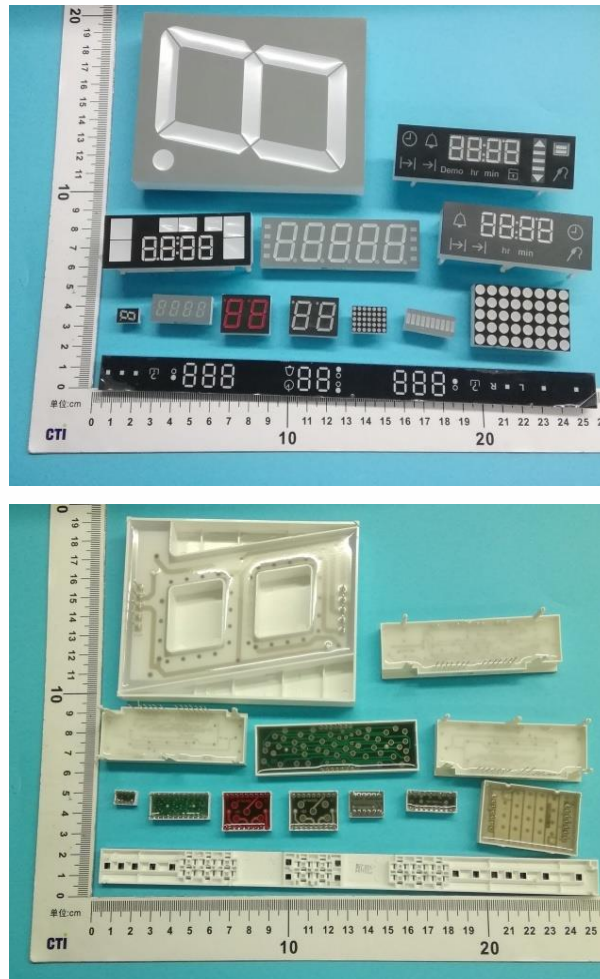
### Statement:

1. This report is considered invalid without approved signature, special seal and the seal on the perforation;
2. The Company Name shown on Report and Address, the sample(s) and sample information was/were provided by the applicant who should be responsible for the authenticity which CTI hasn't verified;
3. The result(s) shown in this report refer(s) only to the sample(s) tested;
4. Without written approval of CTI, this report can't be reproduced except in full;
5. In case of any discrepancy between the English version and Chinese version of the testing reports (if generated), the Chinese version shall prevail.

\*\*\* End of Report \*\*\*

## Appendix

### Client Reference Photo (Non-tested sample)



### Statement:

1. The Appendix Information was/were provided by the applicant who should be responsible for the authenticity which CTI hasn't verified.
2. The Appendix Information is/are the supplement(s) for the Report A222008945810104.