



Test Report

Report No. A222008945810106

Page 1 of 7

Company Name DONG GUAN BRIGHT LED ELECTRONICS LTD
shown on Report
Address NO.8,GAO LONG EAST RD ,GAOBU TOWN,DONG GUAN CTY,GUANG DONG PROVINCE,CHINA 523283

The following sample(s) and sample information was/were submitted and identified by/on the behalf of the applicant

Table with 3 columns: Sample No., Final Product Name, Sample Name(s). Rows include 001, 002, SMD, Chip 树脂, Chip PCB.

Sample Received Date Mar. 11, 2022
Testing Period Mar. 11, 2022 to Mar. 31, 2022
Test Requested As specified by client, to test Lead (Pb), Cadmium (Cd), Mercury (Hg), Hexavalent Chromium (Cr(VI)), Polybrominated Biphenyls (PBBs), Polybrominated Diphenyl Ethers (PBDEs), Phthalates (DBP, BBP, DEHP, DIBP) in the submitted sample(s).
Test Method/Test Result(s) Please refer to the following page(s).

Conclusion

Table with 3 columns: Tested Sample, According to standard/directive, Result. Row: Submitted Sample, RoHS Directive 2011/65/EU with amendment (EU) 2015/863, PASS.

PASS means that the results shown on the report comply with the limits set by RoHS Directive 2011/65/EU with amendment (EU) 2015/863.

Tested by Jonas Guo Reviewed by Ting Yu
Approved by Helen Liu Date Mar. 31, 2022
Helen Liu Lab Authorized Signatory



Centre Testing International Group Co.,Ltd.
Inspection & Testing Services
CTI Building, Xing Dong Community, Xin'an Sub-district, Bao'an District, Shenzhen City, Guangdong Province, P.R. China

# Test Report

Report No. A222008945810106

Page 2 of 7

**Test Method**

Tested Item(s)	Test Method	Measured Equipment(s)
Lead (Pb)	IEC 62321-5:2013	ICP-OES
Cadmium (Cd)	IEC 62321-5:2013	ICP-OES
Mercury (Hg)	IEC 62321-4:2013+AMD1:2017 CSV	ICP-OES
Hexavalent Chromium (Cr(VI))	IEC 62321-7-2:2017 and/or determination of Total Chromium by IEC 62321-5:2013	UV-Vis/ICP-OES
Polybrominated Biphenyls (PBBs)	IEC 62321-6:2015	GC-MS
Polybrominated Diphenyl Ethers (PBDEs)	IEC 62321-6:2015	GC-MS
Phthalates (DBP, BBP, DEHP, DIBP)	IEC 62321-8:2017	GC-MS

# Test Report

Report No. A222008945810106

Page 3 of 7

## Test Result(s)

Tested Item(s)	Result		MDL	Limit
	001	002		
Lead (Pb)	N.D.	N.D.	2 mg/kg	1000 mg/kg
Cadmium (Cd)	N.D.	N.D.	2 mg/kg	100 mg/kg
Mercury (Hg)	N.D.	N.D.	2 mg/kg	1000 mg/kg
Hexavalent Chromium (Cr(VI))	N.D.	N.D.	8 mg/kg	1000 mg/kg

Tested Item(s)	Result		MDL	Limit
	001	002		
<b>Polybrominated Biphenyls (PBBs)</b>				
Monobromobiphenyl	N.D.	N.D.	5 mg/kg	1000 mg/kg
Dibromobiphenyl	N.D.	N.D.	5 mg/kg	
Tribromobiphenyl	N.D.	N.D.	5 mg/kg	
Tetrabromobiphenyl	N.D.	N.D.	5 mg/kg	
Pentabromobiphenyl	N.D.	N.D.	5 mg/kg	
Hexabromobiphenyl	N.D.	N.D.	5 mg/kg	
Heptabromobiphenyl	N.D.	N.D.	5 mg/kg	
Octabromobiphenyl	N.D.	N.D.	5 mg/kg	
Nonabromobiphenyl	N.D.	N.D.	5 mg/kg	
Decabromobiphenyl	N.D.	N.D.	5 mg/kg	

Tested Item(s)	Result		MDL	Limit
	001	002		
<b>Polybrominated Diphenyl Ethers (PBDEs)</b>				
Monobromodiphenyl ether	N.D.	N.D.	5 mg/kg	1000 mg/kg
Dibromodiphenyl ether	N.D.	N.D.	5 mg/kg	
Tribromodiphenyl ether	N.D.	N.D.	5 mg/kg	
Tetrabromodiphenyl ether	N.D.	N.D.	5 mg/kg	
Pentabromodiphenyl ether	N.D.	N.D.	5 mg/kg	
Hexabromodiphenyl ether	N.D.	N.D.	5 mg/kg	
Heptabromodiphenyl ether	N.D.	N.D.	5 mg/kg	
Octabromodiphenyl ether	N.D.	N.D.	5 mg/kg	
Nonabromodiphenyl ether	N.D.	N.D.	5 mg/kg	
Decabromodiphenyl ether	N.D.	N.D.	5 mg/kg	

# Test Report

Report No. A222008945810106

Page 4 of 7

Tested Item(s)	Result		MDL	Limit
	001	002		
<b>Phthalates (DBP, BBP, DEHP, DIBP)</b>				
Dibutyl phthalate (DBP) CAS#:84-74-2	N.D.	N.D.	50 mg/kg	1000 mg/kg
Butyl benzyl phthalate (BBP) CAS#:85-68-7	N.D.	N.D.	50 mg/kg	1000 mg/kg
Di-(2-ethylhexyl) phthalate (DEHP) CAS#:117-81-7	N.D.	N.D.	50 mg/kg	1000 mg/kg
Diisobutyl phthalate (DIBP) CAS#:84-69-5	N.D.	N.D.	50 mg/kg	1000 mg/kg

## Sample/Part Description

- 001 Translucent solid
- 002 PCB (Tested as a whole)<sup>#</sup>

**Remark:** -The sample(s) had been dissolved totally tested for Lead, Cadmium, Mercury.

-<sup>#</sup> The sample(s) was tested as a whole, because it's impossible to disassemble or separate it by current equipment and technology. The result(s) shown on this report may be different from the content of any homogeneous material.

-MDL = Method Detection Limit

-N.D. = Not Detected (<MDL)

-mg/kg = ppm = parts per million

-1000 mg/kg = 0.1%

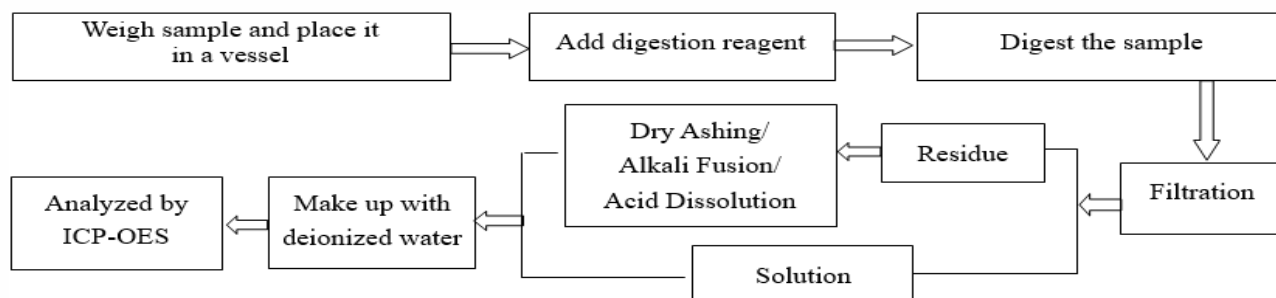
# Test Report

Report No. A222008945810106

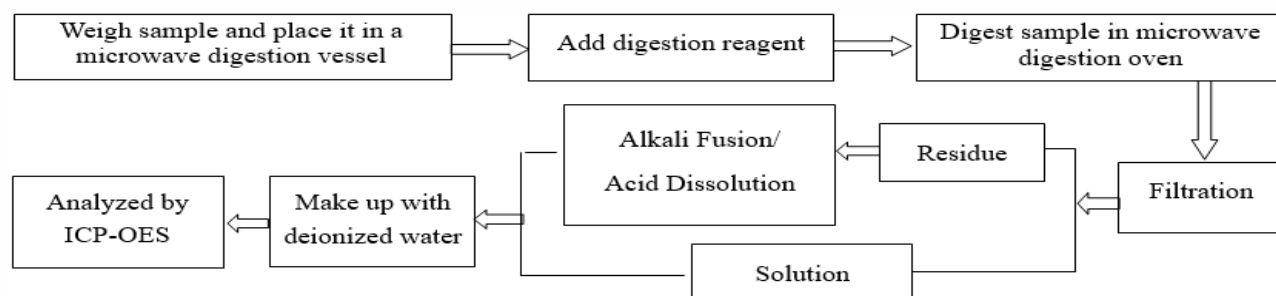
Page 5 of 7

## Test Process

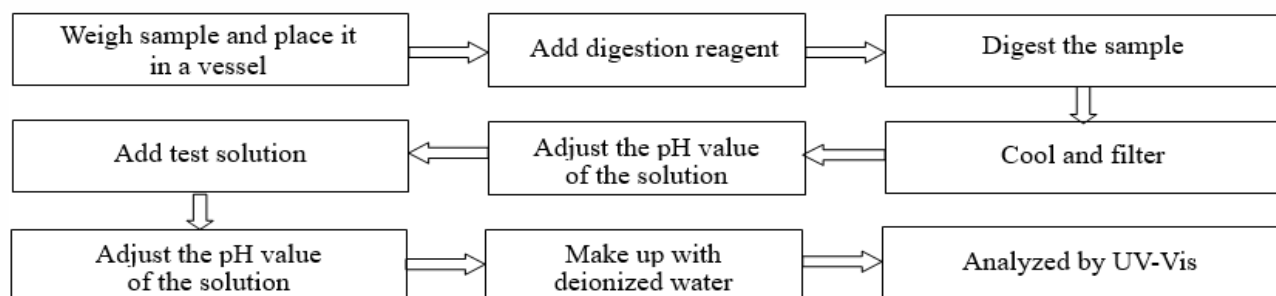
### 1. Lead (Pb), Cadmium (Cd), Chromium(Cr)



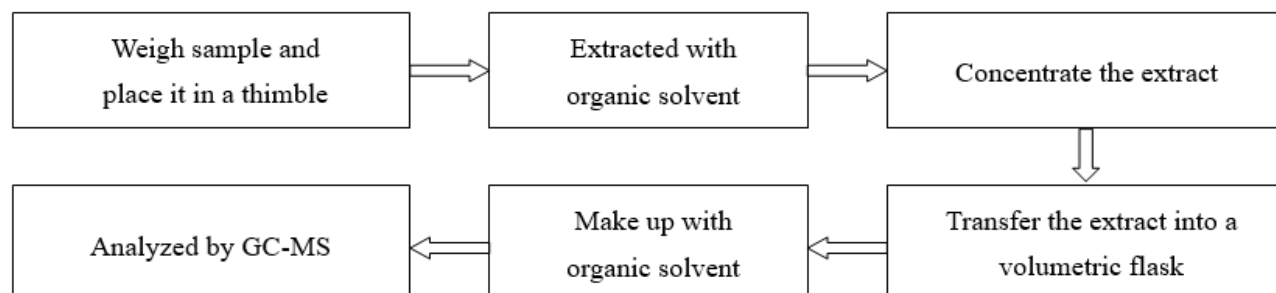
### 2. Mercury (Hg)



### 3. Hexavalent Chromium (Cr(VI))



### 4. Polybrominated Biphenyls (PBBs), Polybrominated Diphenyl Ethers (PBDEs)

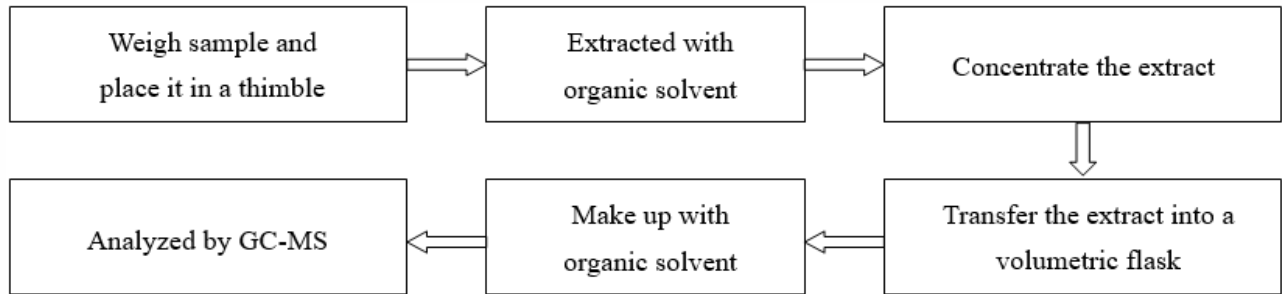


# Test Report

Report No. A222008945810106

Page 6 of 7

## 5. Phthalates (DBP, BBP, DEHP, DIBP)



华测检测

# Test Report

Report No. A222008945810106

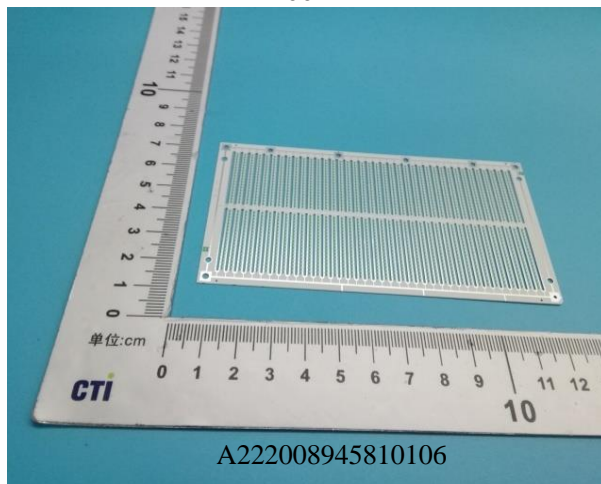
Page 7 of 7

## Photo(s) of the sample(s)

001



002



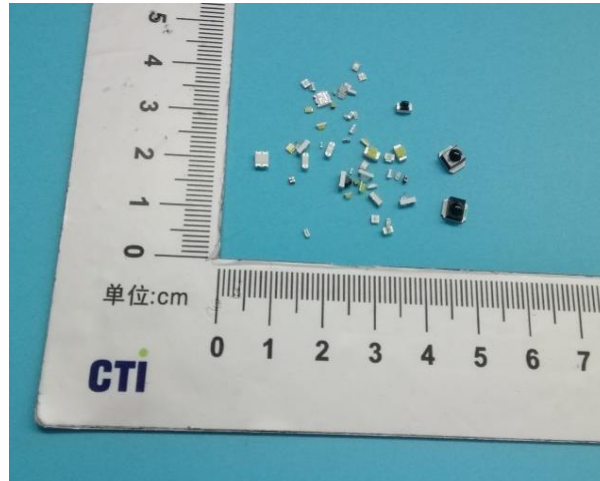
### Statement:

1. This report is considered invalid without approved signature, special seal and the seal on the perforation;
2. The Company Name shown on Report and Address, the sample(s) and sample information was/were provided by the applicant who should be responsible for the authenticity which CTI hasn't verified;
3. The result(s) shown in this report refer(s) only to the sample(s) tested;
4. Without written approval of CTI, this report can't be reproduced except in full;
5. In case of any discrepancy between the English version and Chinese version of the testing reports (if generated), the Chinese version shall prevail.

\*\*\* End of Report \*\*\*

## Appendix

### Client Reference Photo (Non-tested sample)



#### Statement:

1. The Appendix Information was/were provided by the applicant who should be responsible for the authenticity which CTI hasn't verified.
2. The Appendix Information is/are the supplement(s) for the Report A222008945810106.